

Jandy® Caretaker 5-Port Valve Rebuild Kit Installation Instructions

WARNING

FOR YOUR SAFETY - For anything other than the routine cleaning and maintenance described in this manual, this product must be serviced by a contractor who is licensed and qualified in pool equipment by the jurisdiction in which the product will be installed where such state or local requirements exists. In the event no such state or local requirement exists, the installer or maintainer must be a professional with sufficient experience in pool equipment installation and maintenance so that all of the instructions in this manual can be followed exactly. Before installing this product, read and follow all warning notices and instructions that accompany this product. Failure to follow warning notices and instructions may result in property damage, personal injury, or death. Improper installation and/or operation will void the warranty. Improper installation and/or operation can create unwanted electrical hazard which can cause serious injury, property damage, or death.

**These instructions are to be used with the following kit:
5-9-2001 -- Jandy Caretaker 5-Port Valve Rebuild Kit**

WARNING

EQUIPMENT UNDER PRESSURE: Always turn pump off prior to disassembly. Your pump/filter system is operated under pressure and the pressure must be released before you begin work. Please see your pump/filter owner's manual for further instructions.

1. Introduction

This document gives instructions to install the Jandy Caretaker 5-Port Valve Rebuild Kit.

The instructions were written with safety as the priority and must be followed exactly. Not following the written procedure or taking shortcuts may increase the risk of personal injury. Read through the instructions completely before starting the procedure.

Before starting the procedure, use the parts list at the back of these instructions to identify the parts that are in your kit. If any parts are missing from the kit please call your local Jandy distributor for assistance. For technical assistance, contact the Technical Service Department at 1-800-822-7933.

2. Disassembly

2.A Tools Needed

- 7/16" Wrench or Socket
- 5/16" or 8 mm Wrench or Socket
- Small Phillips-Head Screwdriver

2.B Disassembly

See exploded parts diagram (Figure 1) for parts references.

1. Loosen the union nuts located above and adjacent to the water valve. Remove the PVC elbow, union nuts and o-rings. Set aside parts. Remove the strainer cup, clean and set aside.
2. Using a 7/16" wrench or socket loosen and remove the V-clamp. Lift the water valve off the bottom plate.
3. Remove and discard the five (5) small o-rings from the valve outlet ports and the large o-ring from the bottom plate.
4. Using a 5/16" or 8 mm wrench or socket (or Phillips head screwdriver from bottom side), loosen the twelve (12) retaining screws and corresponding nuts. Lift the top housing off of the center plate and set aside. Remove and discard all internal components including the pistons, cam assembly, washers, large o-ring, axle pin and steel balls.

2.C Reassembly

NOTE Do not remove the rubber band holding the impeller and cam assembly in place until step 4.

1. Firmly install each piston with the small hole on top placed toward the center of the center plate. If seated properly, the pistons will not fall out when the center plate is turned upside down.
2. Install a large o-ring on the outside ridge of the center plate.
3. Place a steel ball on each piston hole.
4. With the rubber band securing the cam assembly and the impeller up, slide the axle pin into the center hole of the center plate and press down firmly. Cut and remove the rubber band. The impeller and gears should spin freely.
5. Align the axle pin on the center plate with the corresponding hole on the top housing. Seat the housing onto the center plate (this may require a slight wiggling motion) and secure the retaining screws and nuts. Do not over-tighten.
6. Holding the water valve upside down, place the five (5) small o-rings in the grooves around the outlet ports. (Wet rings to help them stick but do not lubricate.) Install the second large o-ring into the groove of the bottom plate.
7. Position the valve on the bottom plate ensuring the alignment hole and pin line up. Tighten the V-clamp onto the valve, tapping periodically to ensure uniform tension, until the ends are approximately $\frac{3}{4}$ " apart.
8. Reinstall strainer cup, dome up. Reposition PVC elbow and re-tighten unions. Do not over tighten.

3. Replacement Kit List and Exploded Drawing

The following table and drawing are for your reference. To order additional parts, please contact your local Jandy® Distributor.

Description	Qty
Pistons	5
Large O-Rings	2
Small O-Rings	5
Cam Assembly	1
Steel Balls	5
Retaining Screws	12
Retaining Nuts	12

Jandy® Caretaker 5-Port Valve

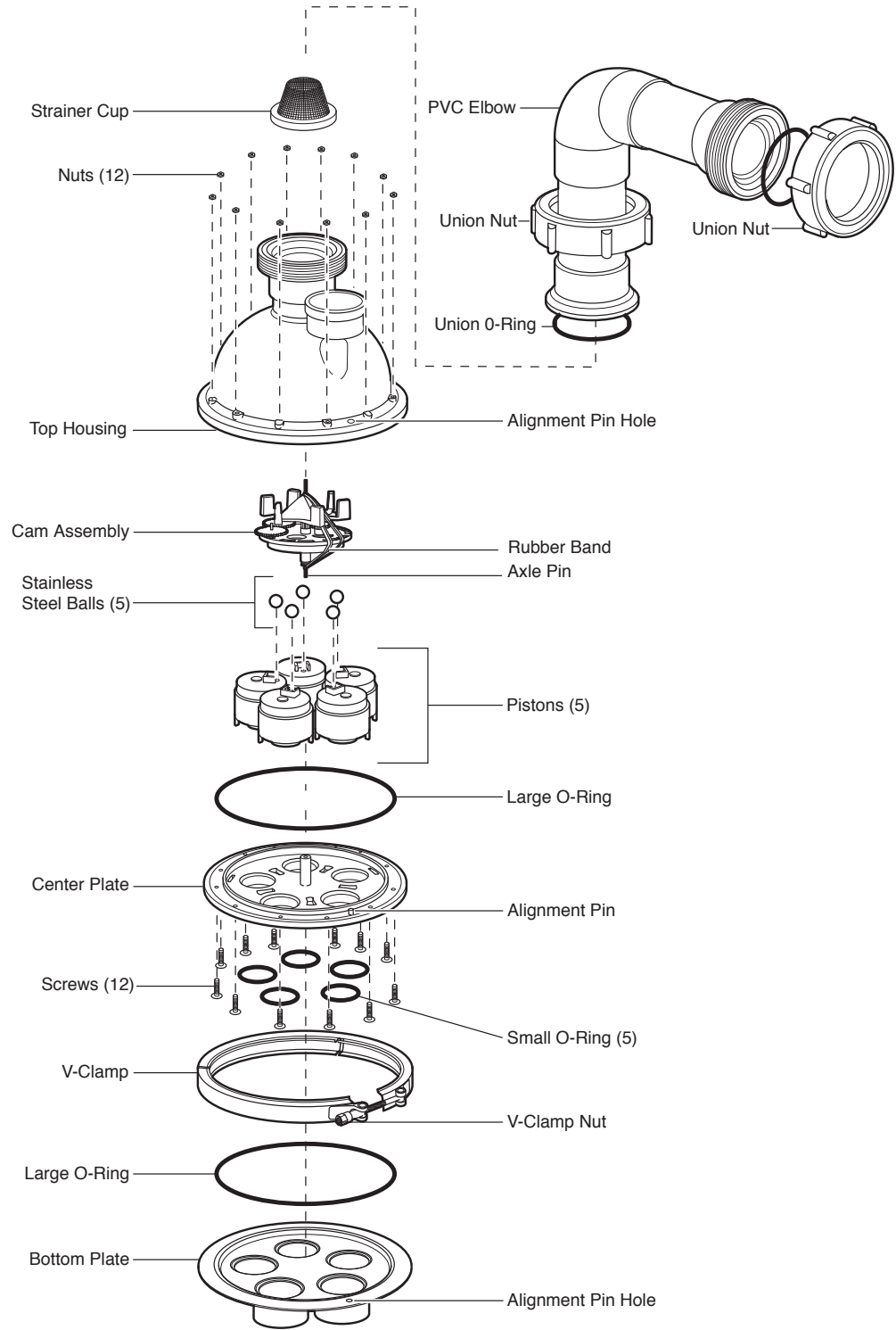


Figure 1. Exploded Parts Diagram

